

Analysis of Algebra 1A1B Program at ESHS

History of the Algebra 1A1B program at ESHS:

For several years ESHS has offered two versions of Algebra. The one-year course is titled Algebra 1AB. The two-year courses are titled Algebra 1A and Algebra 1B. In Fall 2007, we were pleased to transition Algebra 1A to an Area C: Math course, helping students to meet the University of California A-G requirements. This meant that the students who enrolled in Algebra 1B in the 2008-09 school year were able to meet the A-G requirements with a two-year Algebra course as part of their four-year graduation plan. For the 2009-10 school year we added the Area C: Math course Algebra 2 MCR to further help students at ESHS meet their Area C: Math requirement.

Purpose of the Study:

Determine the historical success of the Algebra 1A1B program by measuring which students completed Algebra 2 (either MCR or CP) with a grade of C- or higher second semester. Since mastery of Algebra 2 is cumulative, students who earned a D in the first semester of Algebra 2 and a C- or higher in the second semester of Algebra 2 were included in this study. Students who earned a C- or higher in the second semester of Algebra 2 have met the Area C: Math requirement.

Description of the Four-Year Math Program for Students in the Study:

Students included in this data were enrolled in one of the two math programs below:

Freshman Year	Sophomore Year	Junior Year	Senior Year
Algebra 1A	Algebra 1B	Geometry	Algebra 2 MCR Algebra 2 CP
Algebra 1AB	Algebra 1B	Geometry	Algebra 2 MCR Algebra 2 CP

One student in the sample (class of 2013) accelerated his math program over the summer between Sophomore and Junior years and passed Pre-Calculus Honors Senior year. This student is an outlier.

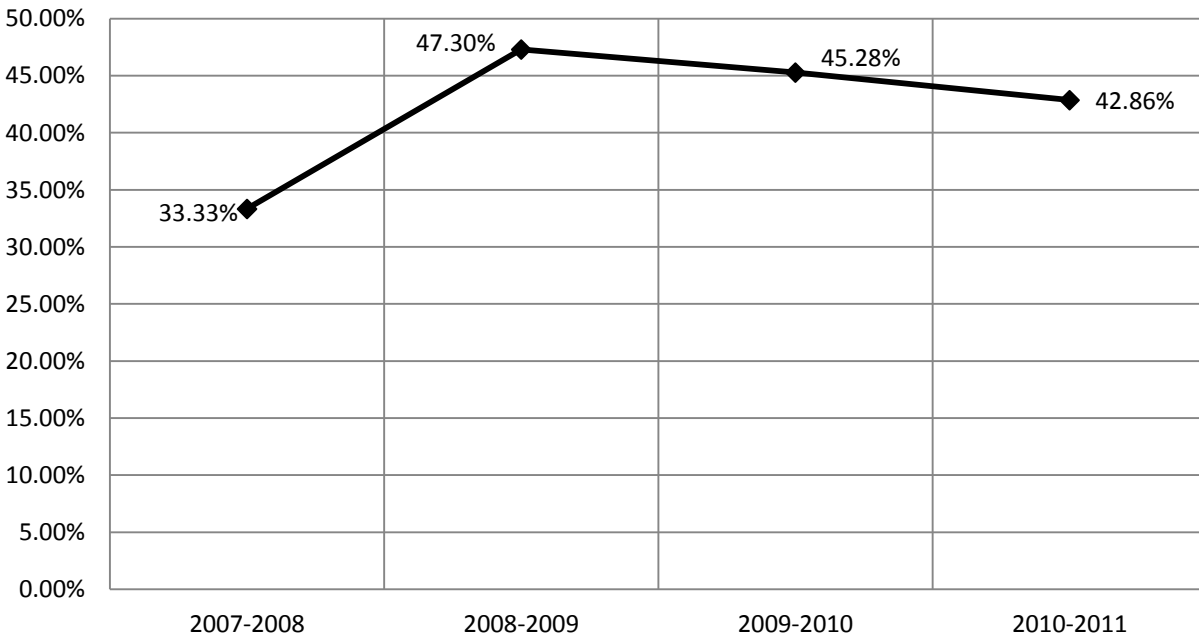
Students who did not pass Algebra 1A Freshman year were not included in the study. Some of these students were enrolled in Algebra 1B multiple years and such dual enrollment would have confounded the results.

Students who were enrolled in Basic Algebra 1B were not included in this study since that designation was not used until the 2011-12 school year. If they pursued an A-G curriculum, Sophomores who were enrolled in Basic Algebra 1B in the 2011-12 school year would be currently enrolled in Algebra 2.

Data:

Year enrolled in Algebra 1B	# enrolled in Algebra 1B that year	# Sophomores enrolled in Algebra 1B that year	# enrolled in Algebra 1B Sophomore year and passed Algebra 2 MCR or CP	% enrolled in Algebra 1B Sophomore year and passed Algebra 2 MCR or CP
2007-08	62	42	14	33%
2008-09	88	74	35	47%
2009-10	72	53	24	45%
2010-11	63	42	18	43%
2011-12	56	44	Enrolled in Algebra 2 in 2013-14	
2012-13	86	75	Will take Algebra 2 in 2014-15	
2013-14	78	62	Will take Algebra 2 in 2015-16	

Percent of Sophomores Passed Algebra 2 CP/MCR with C- or higher



This graph reflects that the majority of students who take Algebra 1B their Sophomore year do not meet the University of California’s Area C: Math requirement. While many of our students do meet the requirement, it is likely that another, researched-based approach will better meet their needs while still supporting them in meeting the Area C: Math requirement.